



# WHITEHALL ESTATE

LUXURY WEDDING'S & EVENTS



*W*edding Brochure 2023/24



Whitehall is situated in Winestead and is undoubtedly the jewel in the crown for Holderness.

A splendid house that is steeped in history and provides a signature back drop for your special day.

The Whitehall is a grade two listed building surrounded by 100 acres of land, designed by the famous British architect John Nash, the house is over 200 years old.

The Whitehall is fully licensed to hold civil marriages and partnerships indoor & outdoor and can accommodate up to 150 guests for a summer alfresco ceremony.

- White Hall Estate Team.



**WHITEHALL ESTATE**  
LUXURY WEDDING'S & EVENTS



WHITEHALL ESTATE  
LUXURY WEDDING'S & EVENTS

# Faqs

Please look through our FAQ sections to answer any queries you may have.

## **Are we licensed for ceremonies?**

We have a full wedding license for indoor and outdoor ceremonies.

## **Is the venue available for exclusive use?**

Even though White Hall estate itself is an occupied property, you will still have exclusive access to our wedding marquee, lodges and beautiful tea room, along with a breathtaking stately home & surrounding 100 acre estate for the backdrop to your wedding photos.

## **Is there catering available on site?**

Yes, speak to our wedding planners, who can discuss further options, from a three course meal to external catering, your dedicated wedding planner can offer some great suggestions from our extensive supplier list

## **Are Tables, chairs and glassware included?**

Yes! all our tables and chairs are included in all packages we offer as standard, these can seat 10 guests per table, with all glassware included, up to 150 guests.

## **How many guests can we invite?**

We can have a maximum of 150 seated guests.

## **Do you have a licensed bar?**

Yes! useage of our bar is included in all our wedding packages as standard.

We also offer exclusive use of our tea room on your wedding, if required. Just speak to your wedding planner.



**WHITEHALL ESTATE**  
LUXURY WEDDINGS & EVENTS

# Faqs

## What are bar prices like?

We offer highly competitive pricing with a varied selection of alcoholic and soft drinks.

## Can we supply our own alcohol?

Absolutely, we do charge a £15.00 corkage fee, we will serve your alcohol before, during the wedding breakfast, prior to the evening guests arriving, which no alcohol is to be brought on site.

## Is Entertainment allowed on site?

Yes, all suppliers must have adequate insurance documentation & PAT Testing certification.

## Can vehicles be left overnight?

Yes sure, but White Hall Estates do not hold any responsibility or liability for loss or damage of property while on site.

## Is Accommodation available?

Certainly! we have 4 on site lodges which can accommodate 2 people in each, with interconnecting doors.

## Can you help us choose our Caterers & Entertainment?

A fantastic caterer is an essential part of your wedding day, we require you to use our in-house catering team, or one of our tried and tested caterers for your special day. Our exclusive suppliers list offers a wide array of food options.



WHITEHALL ESTATE  
LUXURY WEDDINGS & EVENTS

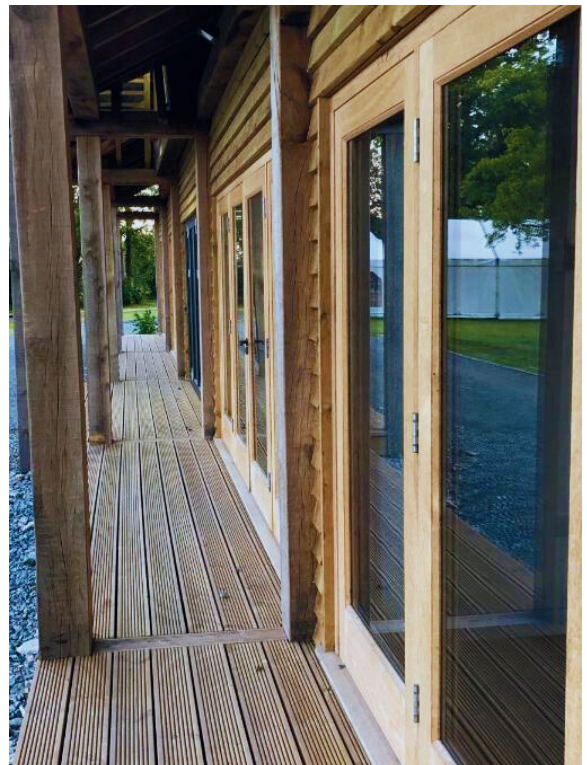
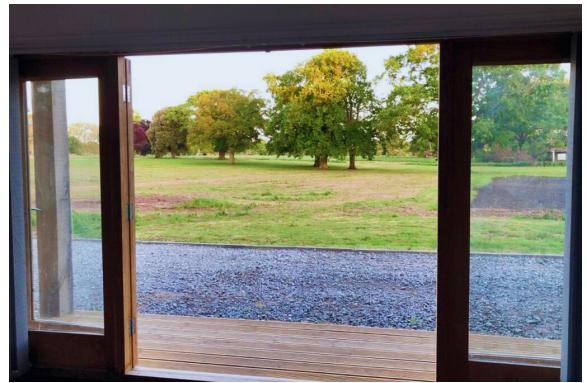


WHITEHALL ESTATE  
LUXURY WEDDING'S & EVENTS

# Stay With Us

Welcome to our enchanting wedding lodges, where dreams come true and love blossoms! Nestled amidst the breathtaking beauty of nature, our wedding lodges offer the perfect backdrop for your special day.

Immerse yourself in luxury and comfort as you step into our thoughtfully designed lodges. Each lodge is elegantly furnished, providing a warm and inviting ambiance that will make you feel right at home.



WHITEHALL ESTATE  
LUXURY WEDDINGS & EVENTS





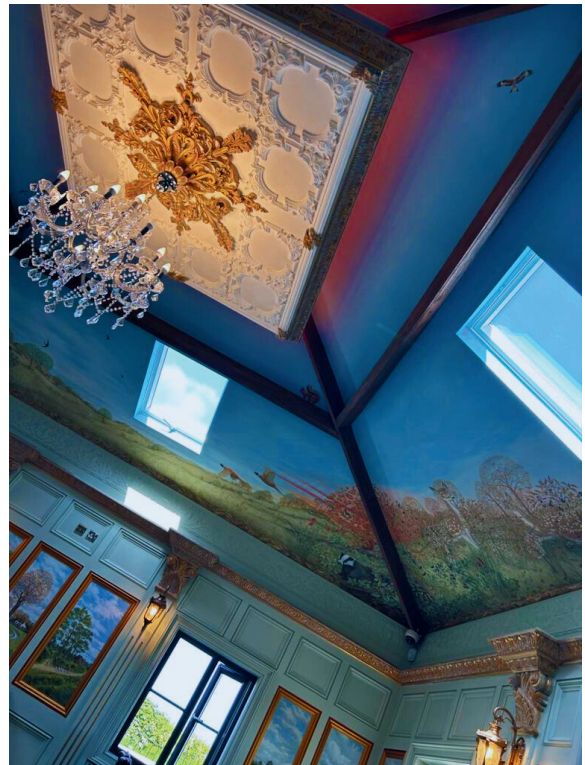
# Tea Room & More

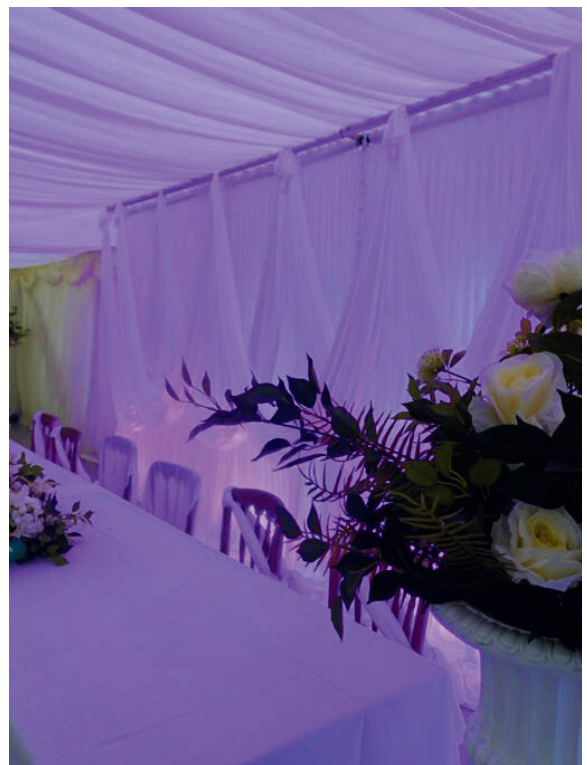
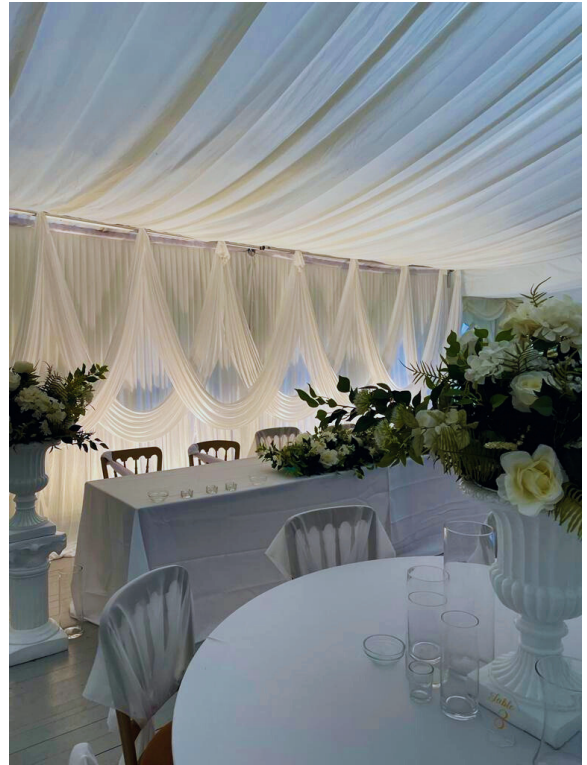
Welcome to our family-run Tea Room, a charming and historic former gatehouse perfect for your wedding reception drinks! Nestled amidst picturesque surroundings. Let our Tea Room be the enchanting backdrop to the beginning of your beautiful journey together.

Our carefully curated menu offers a wide array of teas, & For coffee aficionados, our skilled baristas expertly craft a variety of coffee beverages, from rich espressos to creamy lattes, using freshly roasted beans.

We serve delectable homemade sandwiches, panninines, pastries, cakes, and treats that pair perfectly with your chosen beverages.

You can join us for afternoon tea where you'll be treated to an array of delectable finger sandwiches, freshly baked scones with clotted cream and jam, and an assortment of delightful pastries and cakes. Each item is thoughtfully prepared with attention to detail and a touch of homemade goodness.





  
WHITEHALL ESTATE  
LUXURY WEDDINGS & EVENTS

# Pricing Structure (2024)

These prices are subject to change\*

## Maple Wedding Package

Starting from  
**£4,500**

- Exclusive use of our 150 person Marquee.
- Seating & Tables for up to 150 people.
- Use of the grounds for photography.
- Fully Licensed Bar & All Glassware.
- Your very own wedding planner.
- Free on site Parking.
- Exclusive use of 1 on hand Whitehall Managers.
- Clean Up Service.
- Heated Outdoor Seating Area.
- Extensive use of Wedding Supplier List.

## Oak Wedding Package

Starting from  
**£5,000**

- Exclusive use of our 150 person Marquee.
- Seating & Tables for up to 150 people.
- Use of the grounds for photography.
- Fully Licensed Bar & All Glassware.
- Your very own wedding planner.
- Free on site Parking.
- Exclusive use of 1 on hand Whitehall Managers.
- Clean Up Service.
- Heated Outdoor Seating Area.
- Extensive use of Wedding Supplier List.
- Wedding guest on-site lodges (4 in total)

## Sycamore Wedding Package

Starting from  
**£7,000**

- This package includes all of the above, inclusive of the below.
- Exclusive use of on site Tea Room with licensed bar serving alcohol.
- Wedding venue fully styled & dressed upto 150 guests.
- Exclusive choices of Wedding Ceremony locations on the Whitehall Estate grounds.



WHITEHALL ESTATE  
LUXURY WEDDINGS & EVENTS

# Pricing Structure (2025)

These prices are subject to change\*

## Maple Wedding Package

Starting from  
**£5,000**

- Exclusive use of our 150 person Marquee.
- Seating & Tables for up to 150 people.
- Use of the grounds for photography.
- Fully Licensed Bar & All Glassware.
- Your very own wedding planner.
- Free on site Parking.
- Exclusive use of 1 on hand Whitehall Managers.
- Clean Up Service.
- Heated Outdoor Seating Area.
- Extensive use of Wedding Supplier List.

## Oak Wedding Package

Starting from  
**£5,500**

- Exclusive use of our 150 person Marquee.
- Seating & Tables for up to 150 people.
- Use of the grounds for photography.
- Fully Licensed Bar & All Glassware.
- Your very own wedding planner.
- Free on site Parking.
- Exclusive use of 1 on hand Whitehall Managers.
- Clean Up Service.
- Heated Outdoor Seating Area.
- Extensive use of Wedding Supplier List.
- Wedding guest on-site lodges (4 in total)

## Sycamore Wedding Package

Starting from  
**£7,500**

- This package includes all of the above, inclusive of the below.
- Exclusive use of on site Tea Room with licensed bar serving alcohol.
- Wedding venue fully styled & dressed upto 150 guests.
- Exclusive choices of Wedding Ceremony locations on the Whitehall Estate grounds.



WHITEHALL ESTATE  
LUXURY WEDDINGS & EVENTS

# Pricing Structure (2026)

These prices are subject to change\*

## Maple Wedding Package

Starting from  
**£5,500**

- Exclusive use of our 150 person Marquee.
- Seating & Tables for up to 150 people.
- Use of the grounds for photography.
- Fully Licensed Bar & All Glassware.
- Your very own wedding planner.
- Free on site Parking.
- Exclusive use of 1 on hand Whitehall Managers.
- Clean Up Service.
- Heated Outdoor Seating Area.
- Extensive use of Wedding Supplier List.

## Oak Wedding Package

Starting from  
**£6,000**

- Exclusive use of our 150 person Marquee.
- Seating & Tables for up to 150 people.
- Use of the grounds for photography.
- Fully Licensed Bar & All Glassware.
- Your very own wedding planner.
- Free on site Parking.
- Exclusive use of 1 on hand Whitehall Managers.
- Clean Up Service.
- Heated Outdoor Seating Area.
- Extensive use of Wedding Supplier List.
- Wedding guest on-site lodges (4 in total)

## Sycamore Wedding Package

Starting from  
**£8,000**

- This package includes all of the above, inclusive of the below.
- Exclusive use of on site Tea Room with licensed bar serving alcohol.
- Wedding venue fully styled & dressed upto 150 guests.
- Exclusive choices of Wedding Ceremony locations on the Whitehall Estate grounds.



WHITEHALL ESTATE  
LUXURY WEDDINGS & EVENTS



INFO@WHITEHALLESTATE.UK



07500 844213 • AARON



07427 679190 • BROOK



WHITEHALL.ESTATE



WHITEHALL ESTATE WEDDINGS



**WHITEHALL ESTATE**

LUXURY WEDDINGS & EVENTS